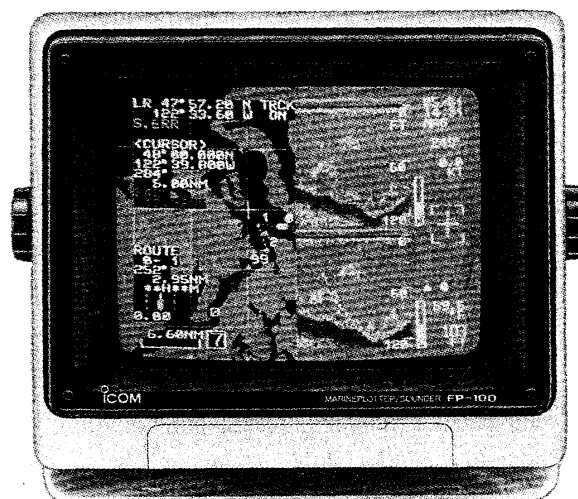


INSTRUCTION MANUAL

MARINEPLOTTER/SOUNDER

FP-100



Icom Inc.

GENERAL CAUTION

The FP-100 is a supplemental aid to navigation only and is not intended to be a substitute for accurate and current nautical charts.

DO NOT try to install a transducer by yourself. If a through hull transducer is selected for your boat, have a dealer install it.

DANGER! HIGH VOLTAGE

- **NEVER OPEN THE UNIT**

This product contains high voltages that are FATAL. This product has no user-serviceable parts inside. All repairs and adjustments **MUST** be made by a qualified electronics technician.

- **HIGH VOLTAGES**

High voltages of up to tens of thousands of volts are used in this equipment. Although prudent measures for safety have been adopted, sufficient care must be taken in the operation, maintenance and adjustment of the equipment.

Electric shock of 1000 volts or more causes electrocution and death; even an electric shock of only 100 volts can be fatal.

- **PREVENTION OF ELECTRIC SHOCK
(FOR QUALIFIED ELECTRONICS TECHNICIAN ONLY)**

To prevent such accidents, turn **OFF** the power source and do not reach inside until you have: ① discharged capacitors through a wire securely grounded at one end; and ② checked that no electrical charges remain inside the device.

Also, it is safest to wear dry wool gloves. **NEVER** use both hands simultaneously; keep one hand in your pocket.

IMPORTANT

READ ALL INSTRUCTIONS carefully and completely before using the FP-100.

SAVE THIS INSTRUCTION MANUAL— This instruction manual contains important safety and operating instructions for the FP-100.

FOREWORD

Thank you for purchasing Icom's FP-100 MARINE-
PLOTTER/SOUNDER.

The FP-100 consists of both a plotter and sounder. You can use both simultaneously or separately on either the supplied 10 inch color CRT or on an external CRT.

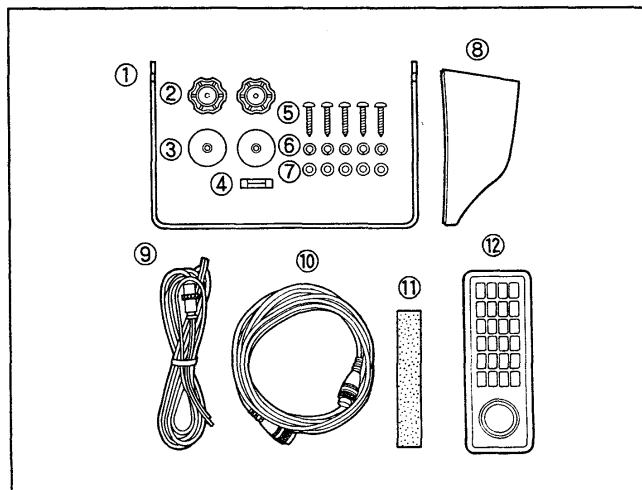
If you have any questions regarding the operation of the FP-100, contact your nearest authorized Icom Dealer or Service Center.

EXPLICIT DEFINITIONS

The following explicit definitions apply to this instruction manual.

WORD	DEFINITION
WARNING	Personal injury, fire hazard or electrical shock may occur.
CAUTION	Equipment damage may occur.
NOTE	If disregarded, inconvenience only. No personal injury, fire hazard or electrical shock will occur.

UNPACKING



PRECAUTIONS

NEVER let metal, wire or other objects touch any internal part of the FP-100.

NEVER place the FP-100 within the reach of children.

NEVER expose the FP-100 to rain, salt water or any other liquids.

NEVER connect the FP-100 to AC or more than 40 V DC. This will damage the FP-100.

AVOID using the FP-100 near any magnetic materials, such as a loudspeaker or a large power transformer, as this can cause distortion to the CRT screen.

AVOID placing the FP-100 near heating equipment or in direct sunlight or where hot or cold air blows directly onto it.

AVOID using the FP-100 in areas where the temperature is over + 50 °C or under 0 °C .

AVOID using strong agents such as benzine or alcohol for cleaning the FP-100 as they may damage the surfaces.

Accessories included with the FP-100:	Qty.
① Mounting bracket	1
② Mounting knobs	2
③ Rubber washers	2
④ Spare fuse (10 A)	1
⑤ Self-tapping screws (M6 x 30)	5
⑥ Spring washers (M6)	5
⑦ Flat washers (M6)	5
⑧ Viewing hood	1
⑨ DC power cable (OPC-275)	1
⑩ Remote controller cable (OPC-321)	1
⑪ Sponge	1
⑫ Remote controller	1

TABLE OF CONTENTS

GENERAL CAUTION	i
DANGER! HIGH VOLTAGE	i
IMPORTANT	ii
FOREWORD	ii
EXPLICIT DEFINITIONS	ii
PRECAUTIONS	ii
UNPACKING	ii
TABLE OF CONTENTS	iii ~ iv
BEFORE OPERATION	v ~ vi

1 PANEL DESCRIPTION	1 ~ 5
■ Front panel and remote controller	1
■ Display explanation	3

2 FIRST APPLYING POWER	6 ~ 10
2-1 Notice	6
2-2 Initial setting in the set mode	7
2-3 Initial setting for chart	8
2-4 Initial setting for GP-2000	9
2-5 Initial setting for RX-1203	10

3 PLOTTER OPERATION	11 ~ 48
3-1 Selecting plotter mode	11 ~ 16
■ Plotter mode	12
■ Plot screen	13
■ Navigation monitor screen	14
■ GPS monitor screen	15
■ Loran-C monitor screen	16

3-2 Chart operation	17 ~ 22
■ Changing the chart scale	17
■ Moving the chart	18
■ Memorizing a chart into the FP-100 memory	19
■ Selecting the navigation receiver	20
■ Selecting the position data method	20
■ Various indications	21
■ Distance measurement	22

3-3 Track operation	23 ~ 24
■ Track indication	23
■ Track color selection	23
■ Plotting interval	24
■ Erasing the track	24

3-4 Event mark	25 ~ 28
■ Programming event marks	25
■ Erasing event marks or changing event type, color and comment	27
■ Listing-up event marks	28

3-5 Navigation function	29 ~ 41
■ Function description	29
■ Programming waypoints	29
■ Erasing waypoints	31
■ Changing waypoint comment and Lat/Lon data	32
■ Destination navigation (Basic navigation)	33
■ Programming, erasing and reprogramming routes	37
■ Route navigation	38
■ External navigation	41

3-6 Plotter alarms	42
■ Alarm types	42
■ Alarm setting	42

3-7 RAM card	43 ~ 44
---------------------------	----------------

3-8 GPS data correction	45
--------------------------------------	-----------

3-9 Loran-C data correction	46 ~ 48
--	----------------

4 SOUNDER OPERATION 49 ~ 72

4-1 Selecting sounder mode 49 ~ 56

- Sounder mode 50
- Compulsory settings 51
- Basic screen 53
- Dual screen 54
- Basic + bottom lock screen 55
- Basic + expansion screen 55
- Basic + temperature graph screen 56

4-2 Basic settings 57 ~ 59

- Depth range setting 57
- Phase shift setting 57
- Sensitivity adjustment 58
- Sensitivity of outer layer adjustment 58
- Frequency selection 59

4-3 Advanced settings 60 ~ 62

- Depth measuring (VRM)..... 60
- Range of bottom lock 60
- Range of expansion 61
- Period of temperature graph 61
- Auto function 62
- Pause function 62

4-4 Sounder menus 63 ~ 66

- Interference rejection 63
- Noise reduction 63
- Display speed setting 64
- Bottom discrimination 64
- Display background color 65
- Depth scale 65
- Data indication 66
- Transmit power 66

4-5 Display interpretation 67 ~ 70

- Color bar and time mark 67
- Echo from the sea bottom 67
- Fish school echos 68
- Second echo 68
- Plankton and tidal current 69
- Thermoclines 69
- Aeration 70
- Spurious bottom lines by side lobes 70

4-6 Sounder alarms 71 ~ 72

- Alarm types 71
- Alarm setting 72
- Alarm operation 72

5 COMMON FUNCTIONS 73 ~ 78

- Screen memory 73
- Key illumination 74
- Trip log 74
- Heading data 75
- Speed data 75
- GPS/Loran-C priority 76
- Positioning correction 76
- True or magnetic bearing 77
- Declination 77
- Built-in simulator 78
- CRT brightness 78

6 INSTALLATION AND CONNECTIONS ... 79 ~ 82

- System connections 79
- Installation 81

7 MAINTENANCE 83 ~ 84

- Troubleshooting 83
- Preventive maintenance 84
- Fuse replacement 84
- Incorrect display 84
- Backup battery 84

8 MENU MODE CHART 85 ~ 86

9 SCREEN FLOW CHART 87 ~ 88

10 LORAN-C MAP 90

11 SPECIFICATIONS 91

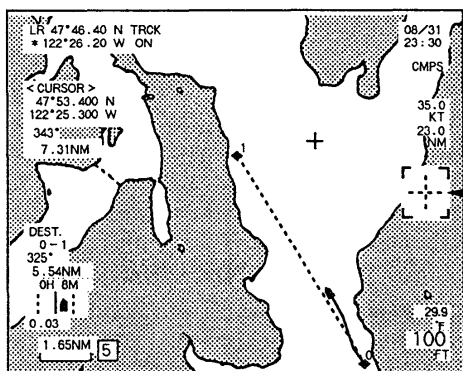
12 OPTIONS 92

BEFORE OPERATION

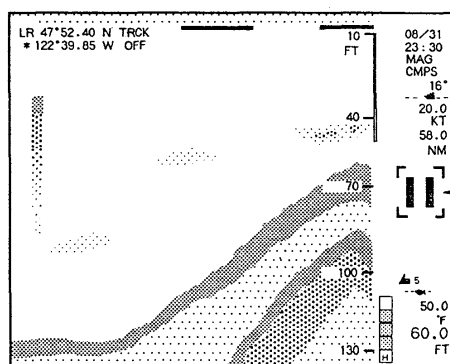
The following descriptions will assist in operation.

• Condition indicator

The condition indicator shows the selected function or condition, or appears when the condition matches a pre-set condition.



Condition indicator



Condition indicator

INDICATION	DESCRIPTION	INDICATION	DESCRIPTION
	ERROR INDICATOR Appears with a beep sound when you push a key which is not applicable for the setting, selection or choice.		CENTER INDICATOR Appears when the center function is activated in the plotter mode.
	CURSOR INDICATOR Appears when the cursor is ON in the plotter mode or combination mode.		TRACK ERASING INDICATOR Appears when the track erasing condition is selected in the plotter mode.
	PAUSE INDICATOR Appears when the pause function is activated in the sounder mode or combination mode.		MEMORY INDICATORS - "MR" appears when calling up a screen memory. - "MW" appears when programming a screen memory. - "CL" appears when erasing a screen memory. See p. 73 for details.
	SOUNDER ALARM INDICATORS Appear with alarm beeps when the sea condition matches the pre-set alarm condition. See p. 71 for details.		PLOTTER ALARM INDICATORS Appear with alarm beeps when your vessel position matches the pre-set alarm condition. See p. 42 for details.

• Data card description

TYPES OF DATA CARDS

Icom offers 3 types of optional data cards as described below. The ROM cards should be programmed to suit your navigation needs.

EX-1140 ROM CARD	Offers pre-programmed charts. 1 or 2 charts are programmed into each card in the factory.
EX-1141 ROM CARD	Offers pre-programmed charts. Several charts are programmed into each card in the factory.
EX-1142 RAM CARD	Used for programming of displayed track event marks, waypoints and routes. The card has memory space for storing 2 sets of separate data.

DATA CARD PRECAUTIONS

The displayed chart on the screen is only for navigation reference. **USE AN ACTUAL MARINE CHART** when you need to make a decision.

NEVER bend the data card or place any heavy objects on the card.

NEVER throw or drop the data card.

AVOID leaving the data card in a dusty area and **NEVER ALLOW** dust to enter the connector.

Since the usual life of the internal battery of a RAM card is approx. 5 years, your important data such as event marks and routes should be recorded into a notebook.

DATA CARD INSTALLATION

Insert the data card into the card slot straight and smoothly until the card stops with the Icom logo mark upside as shown in the figure at right.

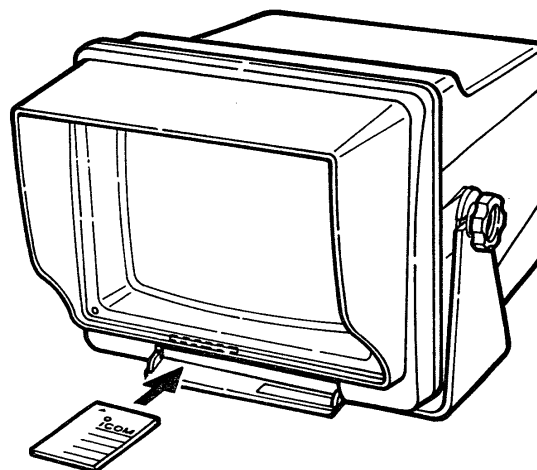
- When a data card is not inserted completely, the card will not operate.

To pull out the data card, pinch the card, then pull the card straight and smoothly.

CAUTION:

NEVER insert or pull out the data card under the following conditions:

- When the center function has been activated.
- While selecting a chart.
- While the displayed chart is moving.
- When reading, programming or erasing the data with a RAM card.



• Trackball and [△]/[▽] keys

For function setting, condition selecting, etc. in the menu mode, the trackball is normally used, but the [△] and [▽] keys can be used instead.

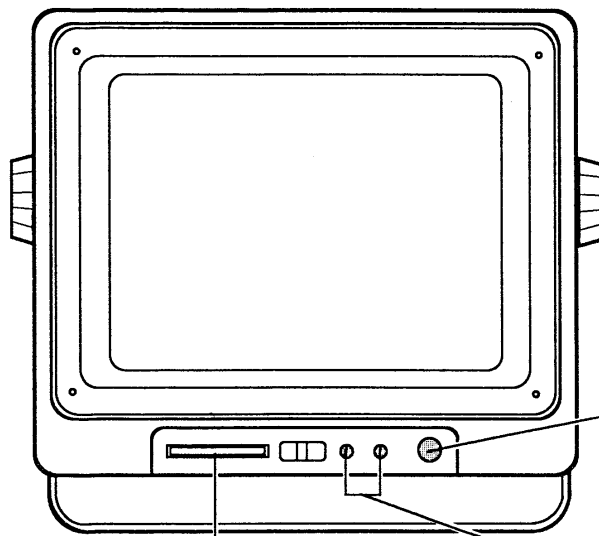
NOTE: In this manual, the method for setting or selecting using the [△]/[▽] keys is not described.

• Cyan letters in the menu mode

In the menu mode, function names or positioning data, etc. may appear in cyan letters.

These cyan letters indicate that you **CANNOT** set the function or edit the positioning data, because the function or positioning data will be incorrect if they are reset.

Front panel and remote controller



CARD SLOT (pgs. vi, 8 and 43)
Accepts optional data cards.

The following data cards are available.

- **EX-1140/EX-1141 ROM CARD**
For digitized chart recall.
- **EX-1142 RAM CARD**
For waypoints, event mark memory.

SENSITIVITY PUSH ON SWITCH [PUSH ON] (p. 58)

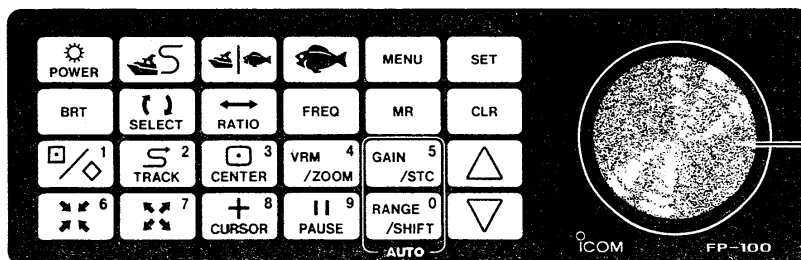
Activates the sensitivity controls.

When the sensitivity is set by the trackball, the sensitivity values set by the front panel controls are invalidated.

SENSITIVITY CONTROLS [HIGH]/[LOW] (p. 58)

Adjust the sensitivities of the sounder.

- [HIGH] is for high frequency (200 kHz) sensitivity.
- [LOW] is for low frequency (50 kHz) sensitivity.
- When increasing sensitivity, rotate controls clockwise.
- When decreasing sensitivity, rotate controls counterclockwise.



TRACKBALL

- Scrolls the displayed chart or moves the cursor.
- Select an item, value or condition in the set and menu modes.

KEY	FUNCTION	Ref. page
	- Turns power ON. - Turns power OFF when pushed for 3 sec.	6
	Sets the CRT brightness level. Use this key together with [▽]/[△]/trackball.	78
	- Programs and clears event marks or waypoints. Use this key together with [SET] and [CLR]. - Selects item number "1" or enters the digit "1" in the menu mode.	25 ~ 35
	- Reduces the scale of the displayed chart. • This key continuously changes the chart scale when pushed and held. - Selects item number "6" or enters the digit "6" in the menu mode.	17

Count on us!

