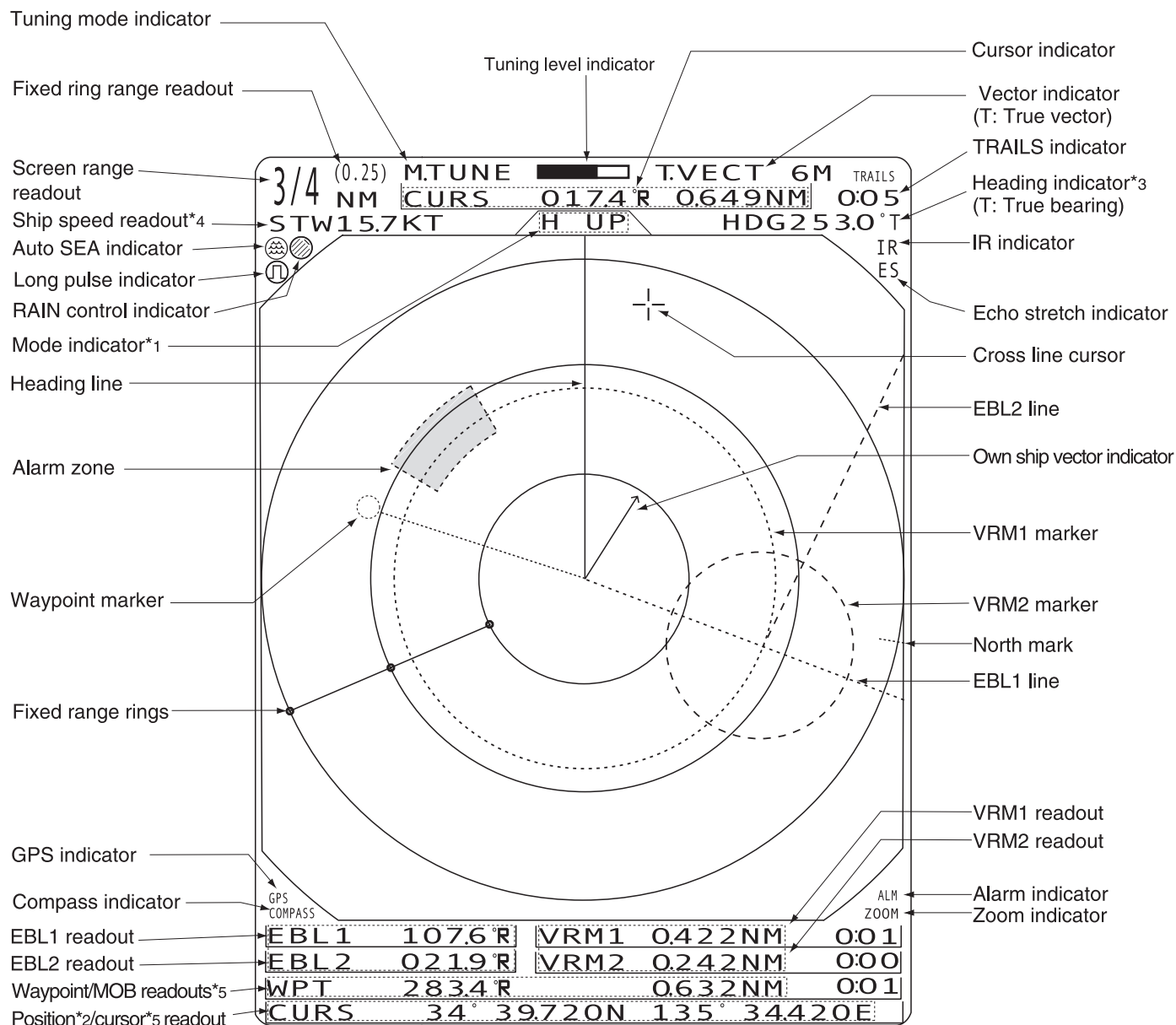


### ■ Display information



\*1 North-up and Course-up screens can be used only when a bearing input (NMEA, N+1 or AUX) is connected.

\*2 NMEA data in 0183 format is necessary.

\*3 Compass data with a bearing input (NMEA, N+1 or AUX) is necessary.

\*4 STW (Speed Through the Water) : Speed sensor is required.

SOG (Speed Over the Ground) : GPS data is required.

\*5 Bearing data and position data are required.

## Control functions

### [GAIN] [增益]

Adjusts the receiver amplifier gain.

### [SEA] [海浪抑制]

This function serves to eliminate echoes from waves at close range. Reduces the receiver gain for close objects within a radius of 8 miles to eliminate sea clutter.

Rotate the control fully clockwise to activate the automatic control function. SEA indicator (☼) appears upper left of the screen.

### [RAIN] [雨雪抑制]

This function eliminates echoes from rain, snow, fog etc.

Rotate the control fully counter clockwise to deactivate the control function. RAIN indicator (☼) disappears.

### [TARGET] [标记]

Push to enter the ATA position data.

Hold down the key for 1 second to toggle the ATA display or navigation display.

### [ALM] [报警]

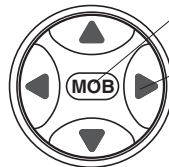
Turns the alarm function ON and OFF. Enters the alarm area setting mode when held down.

### [EBL1 (VRM1)] [方位线1(距标1)]

Displays the EBL1 and VRM1. Push [◀▶▲▼] to adjust the EBL or VRM size.

### [BRILL] [亮度]

Push to increase or decrease the brilliance of the picture on the screen.



### [POWER] [电源开关]

Push to turn the power ON or OFF.

### [TX (SAVE)] [发射(节电)]

Push to selects the PPI screen or Standby screen.

Hold down 1 second to turn the power save function ON.

### [+]/[-] [量程+]/[量程-]

Push to increase or decrease the screen range.

### [MOB] [标位]

Push the key to mark MOB (Man over board) position.

### [◀▶▲▼] key pads

Use to activate and move the cross line cursor. These keys can also be used to select a menu item or change settings.

### [TRAILS] [尾迹显示]

Push to toggle the TRAIL function ON or OFF.

### [MODE] [工作模式]

Push to toggle the H UP, C UP, N UP and TM modes.

### [EBL2 (VRM2)] [方位线2(距标2)]

Displays the EBL2 and VRM2. Push [◀▶▲▼] to adjust the EBL or VRM size.

### [MENU] [菜单]

Calls up VIDEO, FUNCTION, ATA, INT. SETTING menus. (See the list below)

## MENU list

