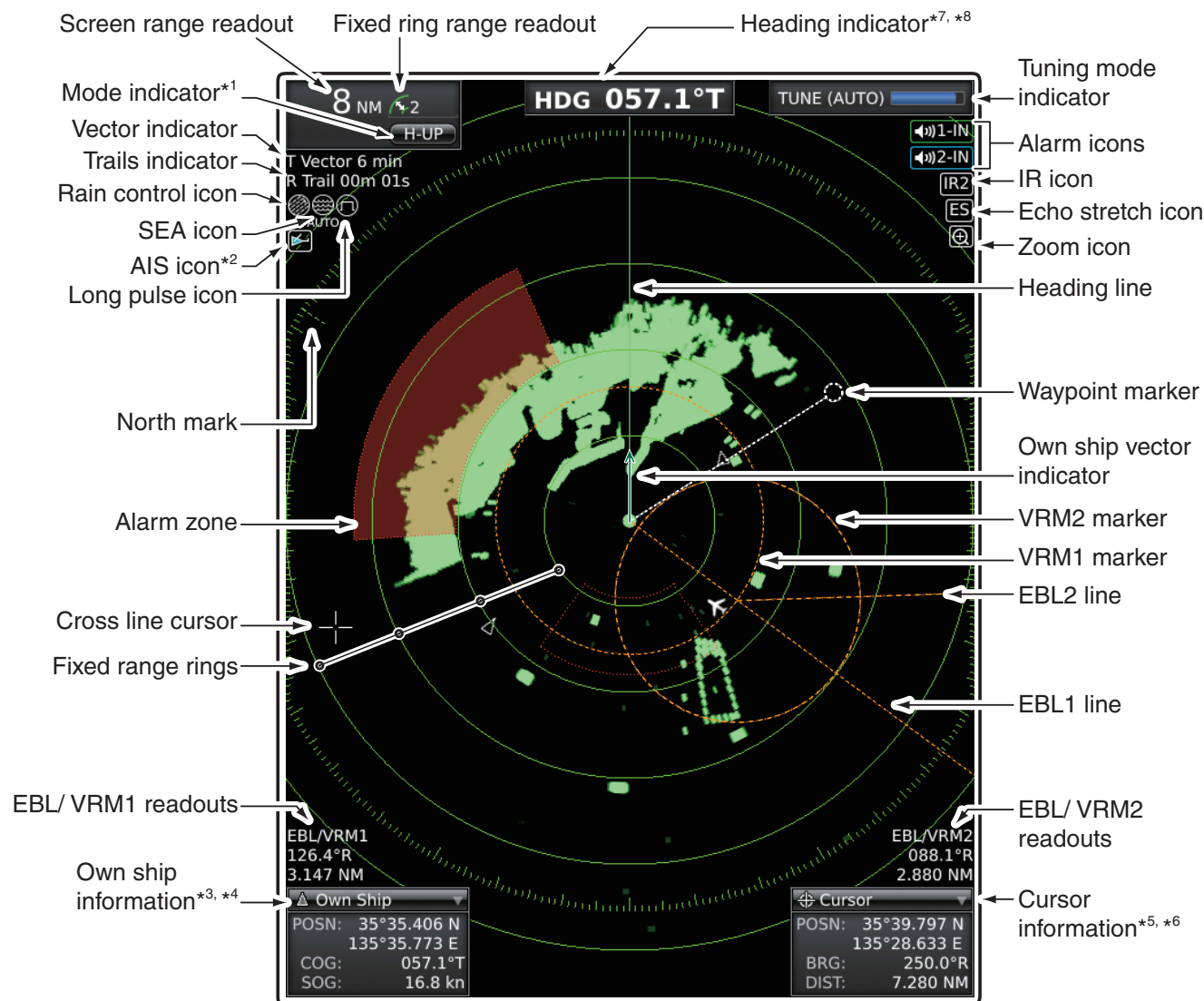


The ATA or AIS functions are described in the instruction manual. Please see the manual for details.

■ Display information



*1 North-up, Course-up and Stabilized Head-up screens can be used only when a bearing input (NMEA, N+1 or AUX) is connected.

*2 AIS data is required.

*3 Your position data is required.

*4 GPS data is required.

COG (Course Over Ground), SOG (Speed Over Ground)

*5 Bearing data and position data are required.

*6 R: Relative bearing, T: True bearing, M: Magnetic bearing

*7 T: True bearing, M: Magnetic bearing

*8 COG (Course Over Ground) is displayed when the "Bearing Input" item in the Initial menu is set to "GPS."

When using COG instead of HDG, the heading indicator may differ from the vessel's actual bow direction.

Icom, Icom Inc. and the Icom logo are registered trademarks of Icom Incorporated (Japan) in Japan, the United States, the United Kingdom, Germany, France, Spain, Russia, and/or other countries.

Control functions

[GAIN]/[增益]

Adjusts the receiver amplifier gain.

[SEA]/[海浪抑制]

This function serves to eliminate echoes from waves in close range. Reduces the receiver gain for close objects within a radius of approx. 8 NM to eliminate sea clutter.

Rotate the control fully clockwise to activate the automatic SEA control function. "AUTO" is displayed below the SEA icon (🌊) when the automatic control function is active.

[RAIN]/[雨雪抑制]

This function eliminates echoes from rain, snow, fog, and so on. Rotate the control fully counter clockwise to deactivate the RAIN function. The RAIN icon (☔) disappears.

[ENTER]/[确认]

Push to set the ATA, AIS, TLL, or WPT target to the selected mode.

Menu screen: Push to enter the Submenu or Option selection mode, and save the setting.

[MENU•TLL]/[菜单•TLL]

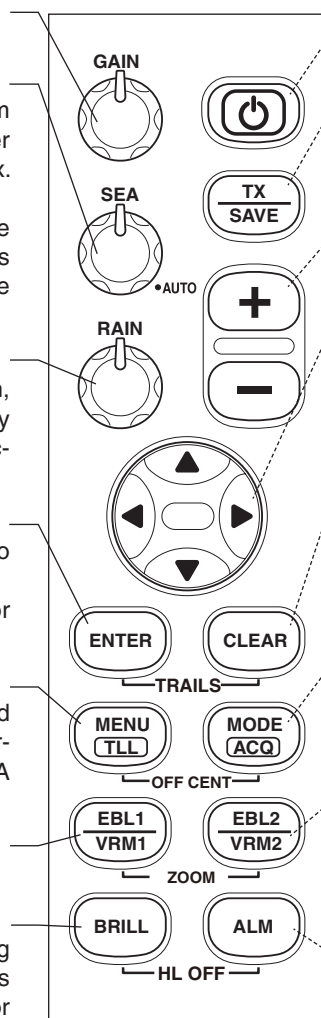
Push to enter or exit the Menu screen. Hold down for 1 second to output the position information where the cursor is placed, to the NMEA output terminals, or push to display its mark.

[EBL1 (VRM1)]/[方位线1(距标1)]

Push to display the EBL1 and the VRM1.

[BRILL]/[亮度]

Push to display the Brilliance/Color setting box. (The key backlight can be adjusted in this setting box.) Push several times to increase or decrease the brilliance of the picture on the display. Hold down for 1 second to select maximum brilliance.



[🔌]

Push to turn the power ON or OFF.

[TX (SAVE)]/[发射(节电)]

Push to toggle between the TX mode and the standby mode. Hold down for 1 second to turn ON the power save function.

[+]/[-]/[量程+]/[量程-]

Push to increase or decrease the screen range.

[▲][▼][◀][▶]

Set the EBLs, VRMs, alarm area, ATA, AIS, TLL target, and so on.

Menu screen: Push to select the Menu group or menu items.

[CLEAR]/[取消]

Menu screen: Push to cancel the Submenu or Option selection mode. Hold down for 1 second to release the ATA target, delete the TLL mark, or change the activated AIS target into a sleeping target.

[MODE•ACQ]/[工作模式•获取]

Push to select H-UP, SH-UP, C-UP, N-UP or TM screens. Hold down for 1 second to acquire an ATA target on the cursor.

[EBL2 (VRM2)]/[方位线2(距标2)]

Push to display the EBL2 and the VRM2. When the EBL1 and the VRM1 are displayed, the center of the VRM2 appears at the intersection point of the EBL1 and the VRM1.

ALARM KEY [ALM]/[报警]

Push [ALM]/[报警] to select the alarm function, ALM1, ALM2, ALM1 & ALM2, or OFF. Hold down [ALM]/[报警] for 1 second to enter the alarm area setting mode.

• The alarm area 2 can be set when the Alarm 2 is ON.

MENU list

