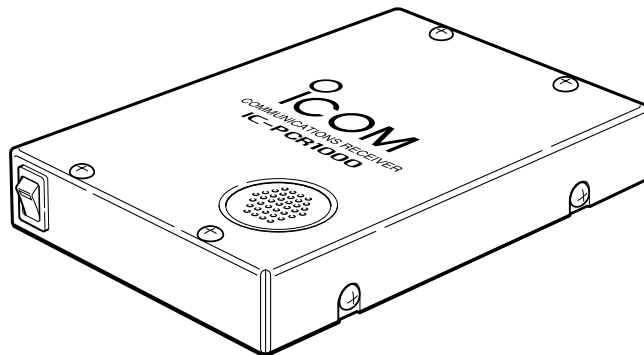




## INSTRUCTION MANUAL

# COMMUNICATIONS RECEIVER FOR COMPUTER **IC-PCR1000**

This device complies with Part 15 of the FCC Rules. Operation is subject to the following two conditions: (1) This device may not cause harmful interference, and (2) this device must accept any interference received, including interference that may cause undesired operation.



Icom Inc.

---

## IMPORTANT

---

**READ ALL INSTRUCTIONS** and on-line help carefully and completely before using the receiver.

**SAVE THIS INSTRUCTION MANUAL** — This instruction manual contains important operating instructions for the **IC-PCR1000 COMMUNICATIONS RECEIVER FOR COMPUTER**.


**USE** antenna(s), such as a well-matched 50  $\Omega$  antenna and feedline. For radio communications, the antenna is of critical importance, along with sensitivity.

---

## EXPLICIT DEFINITIONS

---

| WORD             | DEFINITION  |
|------------------|---|
| <b>⚠ WARNING</b> | Personal injury, fire hazard or electric shock may occur.                               |
| <b>CAUTION</b>   | Equipment damage may occur.   |
| <b>NOTE</b>      | If disregarded, inconvenience only. No risk of personal injury, fire or electric shock. |

Icom, Icom Inc. and  are registered trademarks of Icom Incorporated (Japan) in the United States, United Kingdom, Germany, France, Spain, Russia and/or other countries.

---

## FEATURES

---

### •USER-SELECTABLE INTERFACE

Users can choose from 3 different operating screens depending on their ability level and preference.

### •WIDE FREQUENCY RANGE, MULTI-MODE RECEIVE

The IC-PCR1000 has a wide frequency coverage from 0.5 MHz to 1300 MHz\* with all mode receive capability.

\*Some frequency ranges are restricted depending on version.

### •IF SHIFT

The IF shift function is effective in SSB mode for reducing interference from nearby signals. It does so by electronically shifting the passband of the IF filter.

### •REAL-TIME BANDSCOPE FUNCTION

The real-time bandscope function makes it easy to find busy frequencies and also easy to observe receive frequency band conditions. The maximum band width is  $\pm 200$  kHz.

•NOISE BLANKER •VSC (Voice Scan Control) FUNCTION  
•S-METER SQUELCH •HIGH PERFORMANCE PLL CIRCUIT •A VARIETY OF TUNING STEPS •A VARIETY OF SCANS •DIGITAL AFC CIRCUIT



Versions of the IC-PCR1000 which display “CE” on the serial number seal, comply with the essential requirements of the 89/336/EEC directive for Electromagnetic Compatibility.

---

## PRECAUTION

---

**⚠ WARNING! NEVER** connect the receiver to an AC outlet. This may pose a fire hazard or result in an electric shock.

**NEVER** connect other than the specified AC adapter to the receiver. This connection will ruin the receiver.

**NEVER** connect the receiver to a power source of more than 16 V DC such as a 24 V battery. This connection will ruin the receiver.

**NEVER** allow children to touch the receiver.

**NEVER** expose the receiver to rain, snow or any liquids.

**DO NOT** use or place the receiver in areas with temperatures below 0°C (+32°F) or above +50°C (+122°F) or, in areas subject to direct sunlight.

**AVOID** placing the receiver in excessively dusty environments.

**AVOID** the use of chemical agents such as benzine or alcohol when cleaning, as they damage the receiver surfaces.

Microsoft® and Windows® are registered trademarks of Microsoft Corporation in the U.S.A and other countries. Screen shots produced with permission from Microsoft Corporation. All other products or brands are registered trademarks or trademarks of their respective holders.

### ***For U.S.A. only (FCC information)***

**CAUTION:** Changes or modifications to this receiver, not expressly approved by Icom Inc., could void your authority to operate this receiver under FCC regulations.

### ***Class B digital device users***

This equipment has been tested and found to comply with the limits for a Class B digital device, pursuant to Part 15 of the FCC Rules. These limits are designed to provide reasonable protection against harmful interference in a residential installation. This equipment generates, uses and can radiate radio frequency energy and, if not installed and used in accordance with the instructions, may cause harmful interference to radio communications. However, there is no guarantee that interference will not occur in a particular installation. If this equipment does cause harmful interference to radio or television reception, which can be determined by turning the equipment off and on, the user is encouraged to try to correct the interference by one or more of the following measures:

- Reorient or relocate the receiving antenna.
- Increase the separation between the equipment and receiver.
- Connect the equipment into an outlet on a circuit different from that to which the receiver is connected.
- Consult the dealer or an experienced radio/TV technician for help.

### ***For Canada only***

Operation is subject to the following two conditions: (1) this device may not cause interference, and (2) this device must accept any interference, including interference that may cause undesired operation of the device.

---

## SYSTEM REQUIREMENTS

---

- An RS-232C serial port (38400 bps or faster)
- Microsoft® Windows® 98/98SE/Me/2000/XP
- At least 10 MB of hard disk space
- 640 × 480 pixel display (800 × 600 pixel display recommended)

---

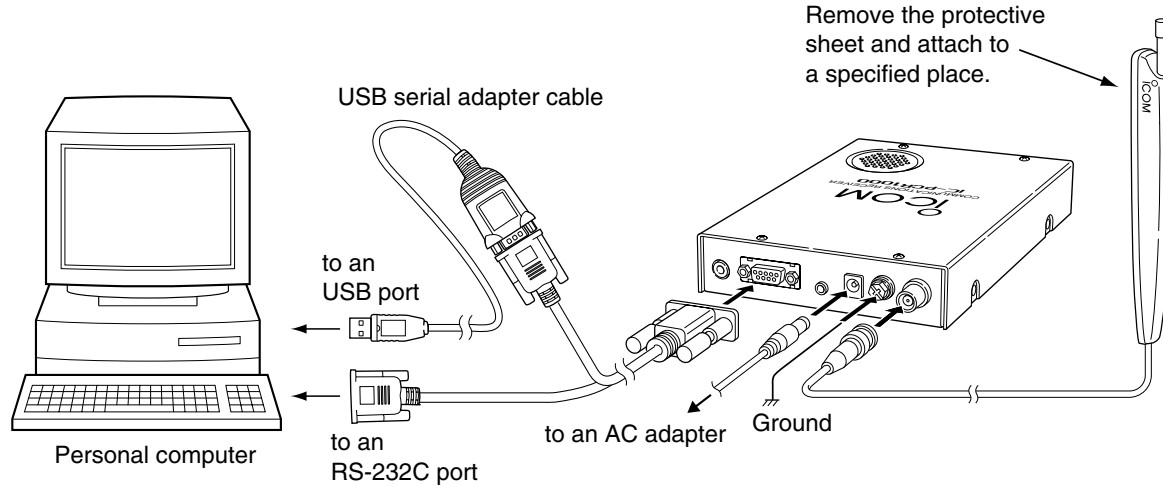
## TABLE OF CONTENTS

---

|   |              |
|---|--------------|
| IMPORTANT .....                                 | i            |
| EXPLICIT DEFINITIONS .....                      | i            |
| FEATURES .....                                  | i            |
| PRECAUTION .....                                | ii           |
| SYSTEM REQUIREMENTS .....                       | iii          |
| TABLE OF CONTENTS .....                         | iii          |
| <b>1 INSTALLATION .....</b>                     | <b>1-7</b>   |
| ■ Hardware installation .....                   | 1            |
| ■ Antenna installation .....                    | 2            |
| ■ Grounding .....                               | 2            |
| ■ AF output level selection .....               | 3            |
| ■ TNC connection .....                          | 4            |
| ■ Software installation .....                   | 5            |
| ■ Uninstallation .....                          | 6            |
| ■ Starting the IC-PCR1000 .....                 | 7            |
| ■ Serial port setting .....                     | 7            |
| <b>2 PANEL DESCRIPTION .....</b>                | <b>8-12</b>  |
| ■ Component screen .....                        | 8            |
| ■ Radio screen .....                            | 12           |
| ■ Communications receiver screen .....          | 12           |
| <b>3 SPECIFICATIONS .....</b>                   | <b>13-14</b> |
| <b>4 SUPPLIED ACCESSORIES AND OPTIONS .....</b> | <b>15</b>    |
| ■ Supplied accessories .....                    | 15           |
| ■ Options .....                                 | 15           |

## ■ Hardware installation

Refer to the diagram below for connections.



\* When using the USB serial adapter cable, USB serial port can be used.  
It is necessary to USB driver installation. The driver is supplied with the USB serial adapter cable.

# 1 INSTALLATION

## ■ Antenna installation

Antennas play a very important role in receiver operation. Connecting a poor quality antenna to the IC-PCR1000 will result in less than optimum performance.

Select antenna(s), such as a well-matched 50  $\Omega$  antenna and feedline. 1.5:1 of Voltage Standing Wave Ratio (VSWR) is recommended for a desired band. Of course, the antenna line should be a coaxial cable.

/// **CAUTION:** Protect your receiver from lightning by using a lightning arrestor.

**NOTE:** The supplied antenna is a simple plain antenna which may not obtain indicated specifications. To obtain maximum performance from the IC-PCR1000, you must purchase an external wide band antenna such as an optional Icom AH-7000 (25–1300 MHz), etc.

Contact your nearest Icom Dealer or Service Center for regarding optimum antenna locations.

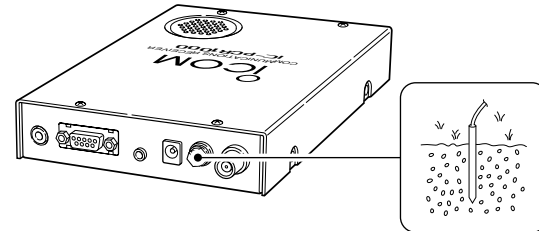
/// The antenna connector type is BNC, so an adapter may be necessary to connect an optional antenna.

## ■ Grounding

/// **WARNING: NEVER** use a gas pipe or electrical conduit pipe for grounding.

To prevent accidents involving electricity and interference from computers, ground the receiver through the GROUND terminal on the rear panel.

For best results, connect a heavy gauge cable to a water pipe or long, earth-sunk copper rod. Make the distance between the [GND] terminal and ground as short as possible.

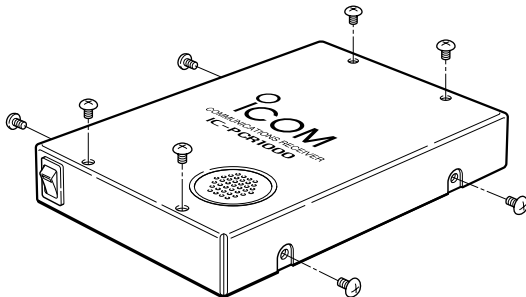


## ■ AF output level selection

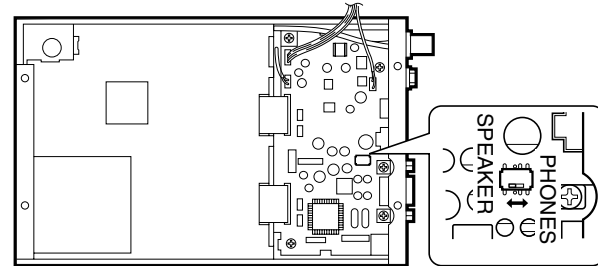
The received audio can be input into your computer via the sound card.

Before inputting the received audio into the [LINE IN] connector (connector name depends on your sound card), the output level of the [EXT-SP] must be set properly. Perform as follows:

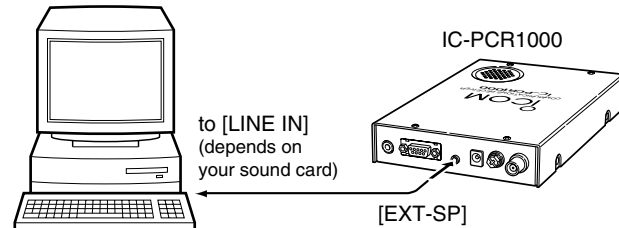
- ① Remove the 8 screws from the cover as shown below. Open the cover.



- ② Select the output level as shown below.
  - "SPEAKER" for internal speaker.
  - "PHONES" for PC sound card or headphones.



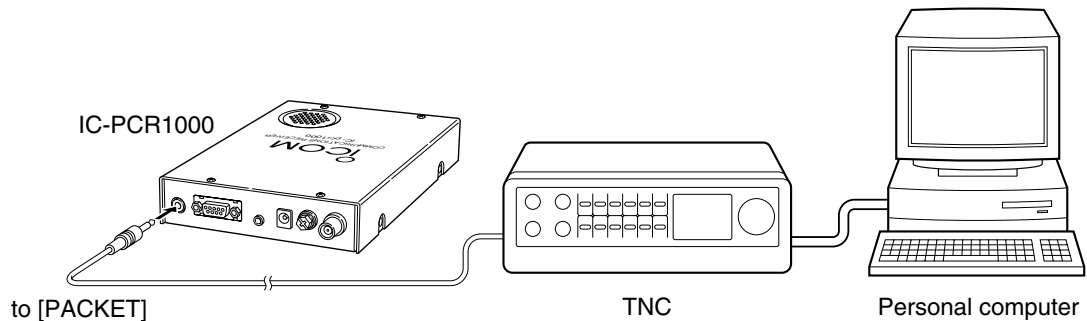
- ③ Replace the 8 screws and cover.
- ④ Connect an appropriate cable between IC-PCR1000 and PC.
  - Plug for [EXT-SP] is supplied with the receiver.



# 1 INSTALLATION

## ■ TNC connection

The IC-PCR1000 can receive 9600 bps packet communication (AFSK). Connect the TNC (Terminal Node Controller) as follows.



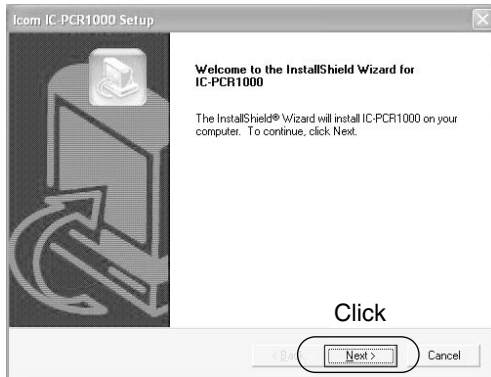


## ■ Software installation

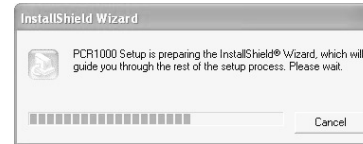
When installing into a Windows XP or Windows 2000 environment, log on as the **administrator**.

- ① Quit all applications when windows is running.
- ② Insert the CD into the CD drive.
- ③ Select 'Run' from the [Start] menu.
- ④ Type the setup program name with full path name, then push the [Enter] key. (D:\SETUP.exe [Enter])
- ⑤ Click [OK].

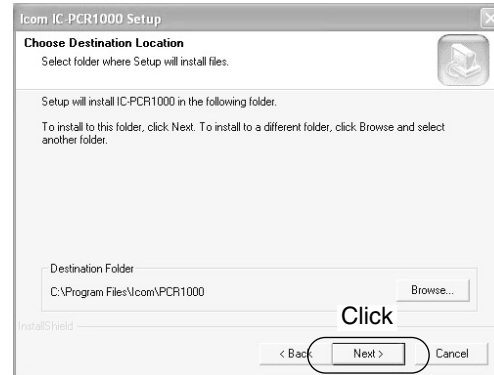
\* The following screens show Windows XP.



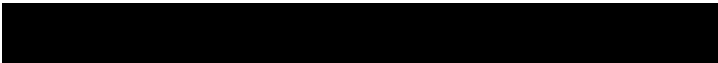
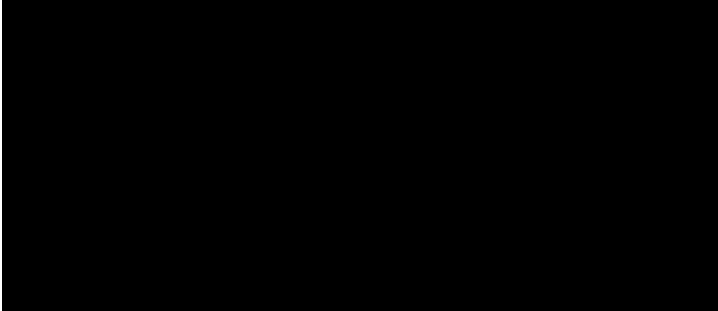
- The "InstallShield® Wizard" starts preparing the installation.



- ⑥ After the preparation, the following dialog is displayed. Click [Next>].  
Installing starts.



**Count on us!**



A-5456H-1EX-③  
Printed in Japan  
© 1997–2003 Icom Inc.

**Icom Inc.**  
1-1-32 Kamiminami, Hirano-ku, Osaka 547-0003 Japan