



ADVANCED MANUAL

COMMUNICATIONS RECEIVER **IC-R30**

Icom Inc.

INTRODUCTION

1 POWER SUPPLY

2 microSD CARD

3 RECORDING AND PLAYING BACK

4 MEMORY OPERATION

5 GPS OPERATION

6 MENU SCREEN

7 OTHER FUNCTIONS

8 Bluetooth® OPERATION

9 UPDATING THE FIRMWARE

10 OPTIONS

11 SPECIFICATIONS

INTRODUCTION

Thank you for choosing this Icom product. This product is designed and built with Icom's state of the art technology and craftsmanship. With proper care, this product should provide you with years of trouble-free operation.

■ About the IC-R30 manuals

The following manuals are supplied for your IC-R30.

Basic manual (Supplied with the IC-R30)

Instructions for the basic operations, precautions.

Advanced manual (This manual)

Instructions for the advanced operations, as shown below.

- Battery operation*
- Using a microSD card*
- Recording the received audio*
- Memory operation*
- GPS operation*
- Menu screen*
- Other functions*
- Bluetooth® operation*
- Firmware updating
- Options*
- Specifications

△ *Only the basic instructions are described in the BASIC MANUAL.

Icom, Icom Inc. and the Icom logo are registered trademarks of Icom Incorporated (Japan) in Japan, the United States, the United Kingdom, Germany, France, Spain, Russia, Australia, New Zealand, and/or other countries.

NXDN is a trademark of Icom Incorporated and JVC KENWOOD Corporation.

dPMR is a trademarks of the dPMR MoU Association.

Adobe, Acrobat, and Reader are either registered trademarks or trademarks of Adobe Systems Incorporated in the United States and/or other countries.

Microsoft and Windows are registered trademarks of Microsoft Corporation in the United States and/or other countries.

IOS is a trademark or registered trademark of Cisco in the U.S. and other countries and is used under license.

Apple, iPhone and iPad are trademarks of Apple Inc., registered in the U.S. and other countries.

The iPhone trademark is used under license from AiPhone Co., Ltd.

Android and Google Play are registered trademarks or trademarks of Google Inc, and Google is registered trademark or trademark of Google, Inc.

The Bluetooth word mark and logos are registered trademarks owned by Bluetooth SIG, Inc. and any use of such marks by Icom inc. is under license.

Other trademarks and trade names are those of their respective owners.

Functions of Adobe® Acrobat® Reader®

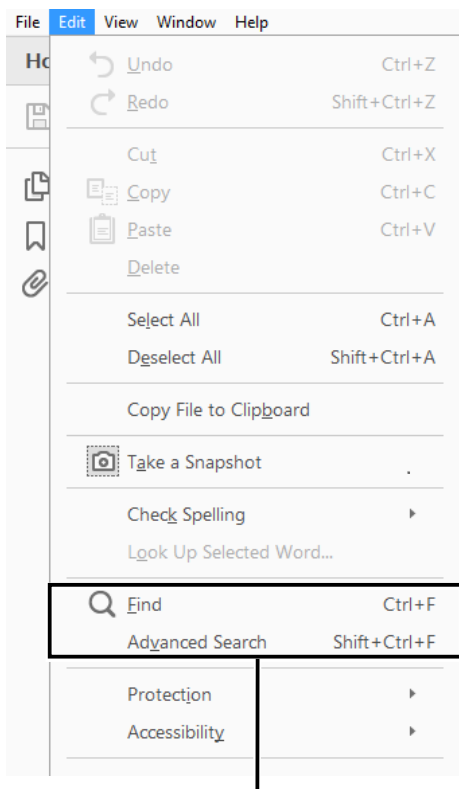
The following functions and features can be used with Adobe Acrobat Reader.

• Keyword search

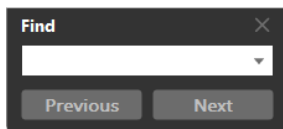
Click “Find” (Ctrl+F) or “Advanced Search” (Shift+Ctrl+F) in the Edit menu to open the search screen.

This is convenient when searching for a particular word or phrase in this manual.

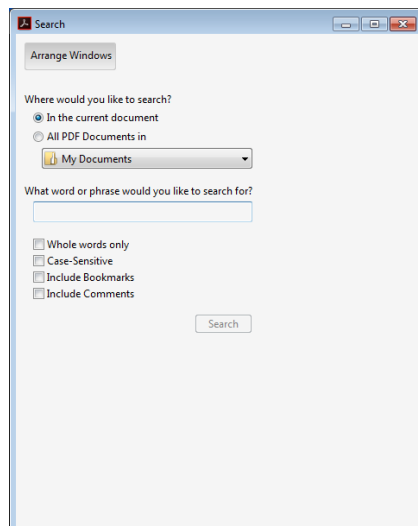
* The menu screen may differ, depending on the Adobe Acrobat Reader version.



• Find screen



• Advanced search screen



Click to open the find or search screen or advanced search screen.

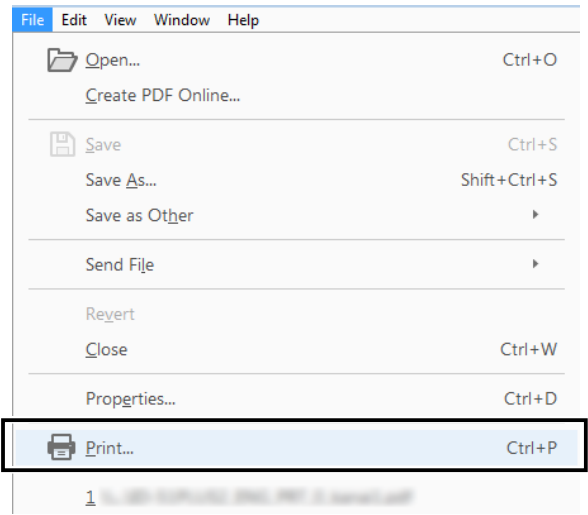
Functions of Adobe® Acrobat® Reader® (Continued)

• **Printing out the desired pages.**

Click “Print” in the File menu, and then select the paper size and page numbers you want to print.

*The printing setup may differ, depending on the printer. Refer to your printer’s instruction manual for details.

*Select "A5" size to print out the page in the original manual size.

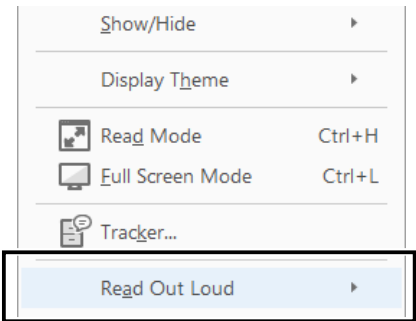


• **Read Out Loud feature.**

The Read Out Loud feature reads aloud the text in this PDF.

Refer to the Adobe Acrobat Reader Help for the details.

(This feature may not be usable, depending on your PC environment including the operating system.)



* The screen may differ, depending on the Adobe Acrobat Reader version.

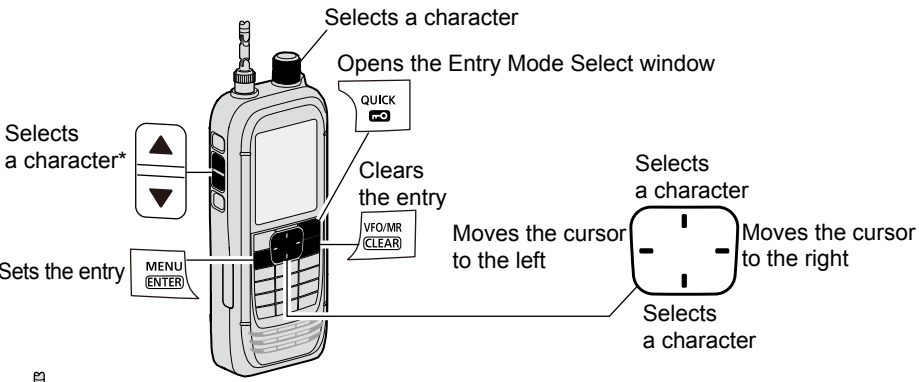
INTRODUCTION

Entering and editing text

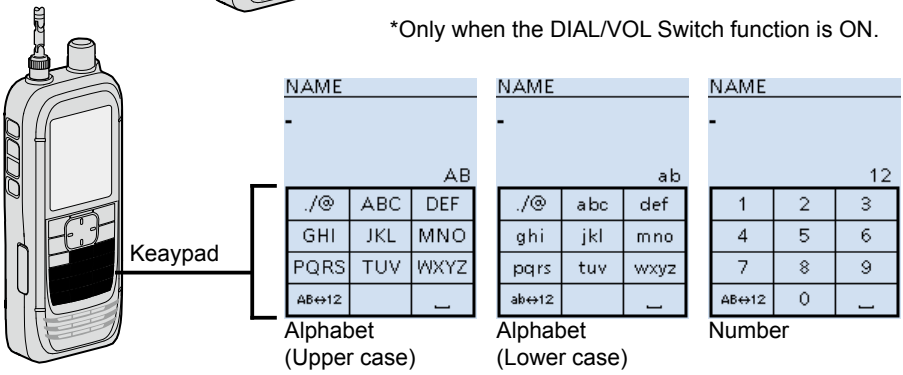
The usable characters are alphabets, numbers and symbols.

To enter characters

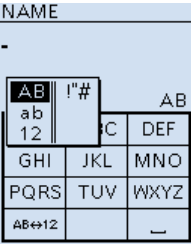
- To insert a text, move the cursor to a place to enter, then push the keypad.
- ① You can elect a character by rotating [DIAL], or pushing D-pad (Up) or D-pad (Down).
- When the character type is "AB" or "ab," and while entering a character, push [QUICK] to select upper case or lower case letters.
- To clear a character, push [CLEAR].
- To consecutively clear characters, continuously hold down [CLEAR].



*Only when the DIAL/VOL Switch function is ON.



Entry Mode Select window



Character type	Selectable characters and symbols
AB	A to Z, 0 to 9, (space)
ab	a to z, 0 to 9, (space)
12	0 to 9, (space)
!"#\$%&'()*+,-./:;<=>?@[\]^_`{ }~(space)	

Entering and editing text (Continued)

◆ Usable characters

The usable characters and symbols, and the maximum characters differ, depending on the item. See the following list for details.

Category	Item	Character type	Maximum characters	Illegal characters	Ref.
Memory mode	Memory name	[AB] [ab] [12] [!"#]	16	—	p. ?-?
	Bank name	[AB] [ab] [12] [!"#]	16	—	
Program scan	Scan name	[AB] [ab] [12] [!"#]	16	—	
P-LINK	Scan Link name	[AB] [ab] [12] [!"#]	16	—	
SD Card	Save Setting	[AB] [ab] [12] [!"#]	20	/ : ; * < >	p. ?-?
	Export	[AB] [ab] [12] [!"#]	20	/ : ; * < >	p. ?-?
GPS Memory	Memory name	[AB] [ab] [12] [!"#]	16	—	p. ?-?
	Group name	[AB] [ab] [12] [!"#]	16	—	p. ?-?
Bluetooth®	Device name	[AB] [ab] [12]	8	—	p. ?-?

[AB]: A to Z, 0 to 9, (space)

[ab]: a to z, 0 to 9, (space)

[12]: 0 to 9, (space)

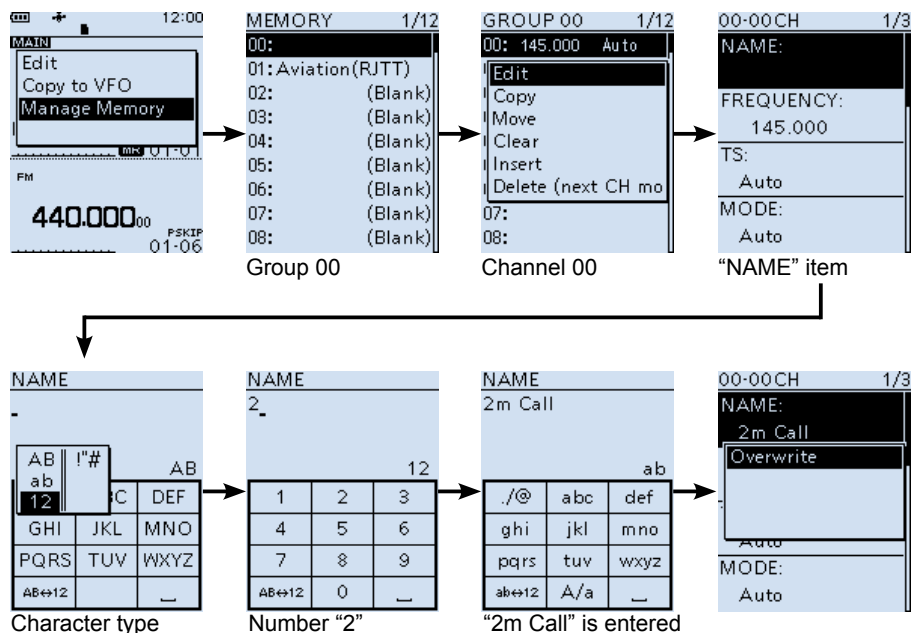
[!"#]: ! " # \$ % & ' () * + , - . / : ; < = > ? @ [\] ^ _ ` { | } ~ (space)

Entering and editing text (Continued)

◆ How to enter

Example: Entering "2m Call" as a Memory name of channel 00 in group 00.

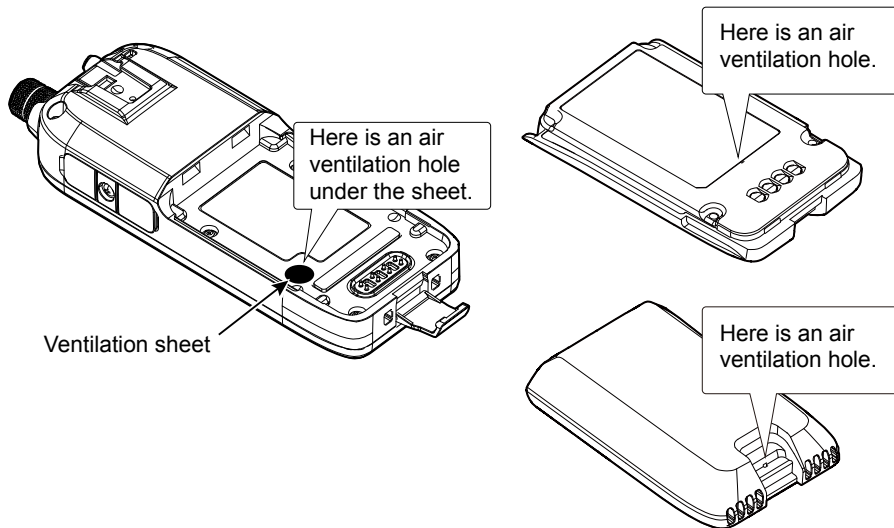
1. Push [VFO/MR] to enter the Memory mode.
2. Push [MW].
3. Select "Manage Memory."
(Rotate [DIAL] to select it, then push [ENTER].)
4. Select group "00."
5. Select channel "00," then push [QUICK].
6. Select "Edit".
• The Edit screen is displayed.
7. Select "NAME."
• The Memory name edit screen is displayed.
8. Push [QUICK] to select a character type.
9. Push [MHz] to select "2."
① To enter symbols, select [!"#].
10. Repeat steps 8 ~ 9 to enter a name.
11. After entering, push [ENT].
• Returns to the Edit screen and the entered name is displayed.
12. Push [QUICK], then select "<<Overwrite>>."
• A confirmation dialog appears.
13. Select <YES>.
• A beep sounds, then returns to the Memory mode.



About the air ventilation holes

There are air ventilation holes on the receiver body and battery pack/case that adjust the air pressure inside of the receiver.

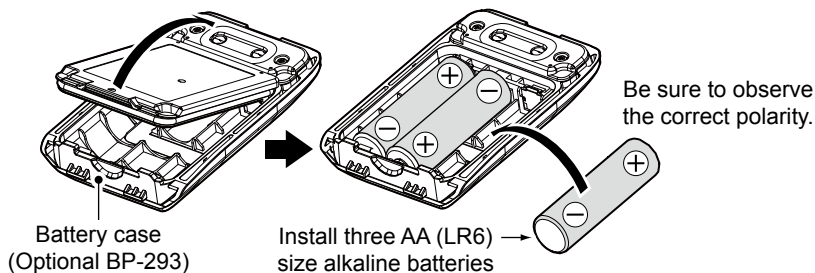
- ① Applying a sticker over the ventilation hole blocks the air pressure adjustment, and may decrease the audio output level.
- ① Damage to the ventilation sheet may reduce the water protection capability.



■ About the Battery Case	1-2
◇ Battery life	1-2
◇ About the battery replacement	1-2
◇ About the safety use of battery case.....	1-3
■ Charging with a USB cable	1-4

■ About the Battery Case

- Remove the battery case, then install three AA (LR6) size alkaline batteries, as described below.



◇ Battery life

The approximate battery life (operating time) is approximately 4 hours under the following assumptions:

- Dualwatch function: ON

(A band: Receiving, B band: Stand-by, Power Save function: ON (Auto (Short)))

- ① The battery life may differ, depending on the operating style, or the installed alkaline batteries.
- ① The batteries may seem to have low capacity when used in low temperatures. Keep the case warm in low temperature environments.

◇ About the battery replacement

When the alkaline batteries are almost exhausted, "LOW BATTERY" is displayed, then the receiver is automatically turned OFF. Replace all batteries with new alkaline batteries.

- ① When the BP-293 battery case is attached to the receiver, the battery icon cannot display the battery capacity of the alkaline batteries. The battery icon stays as "■," and it does not reflect with the true battery capacity.

1 POWER SUPPLY

◇ About the safety use of the battery case

- When installing batteries, make sure they are all the same brand, type and capacity. Also, do not mix new and old batteries together.
- Keep the battery terminals clean. It's a good idea to occasionally clean them.
- Never incinerate used battery cells since the internal battery gas may cause them to rupture.
- Never expose a detached battery case to water. If the battery case gets wet, be sure to wipe it dry before using it.
- Never use batteries whose insulated covering is damaged.

CAUTION: Install only alkaline batteries into the BP-293.

NOTE:

- Remove the alkaline batteries when battery case is not used.
- Do not connect a USB cable while the battery case is attached to the receiver. The operation while connecting a USB is not guaranteed.

TIP:

- The BP-293 meets IPX4 requirements for waterproof protection, only when it is attached to the IC-R30.
- The batteries may seem to have low capacity when used in low temperatures. Keep the case warm in low temperature environments.

Count on us!

