



INSTRUCTION MANUAL

VHF AIR BAND TRANSCEIVER

IC-A24 IC-A6

This device complies with Part 15 of the FCC Rules. Operation is subject to the condition that this device does not cause harmful interference.

Icom Inc.



IC-A24



IC-A6

FOREWORD

Thank you for purchasing this Icom product. The IC-A24/A6 VHF AIR BAND TRANSCEIVER is designed and built with Icom's state of the art technology and craftsmanship. With proper care this product should provide you with years of trouble-free operation.

IMPORTANT

READ ALL INSTRUCTIONS carefully and completely before using the transceiver.

SAVE THIS INSTRUCTION MANUAL— This instruction manual contains important operating instructions for the IC-A24/A6.

EXPLICIT DEFINITIONS

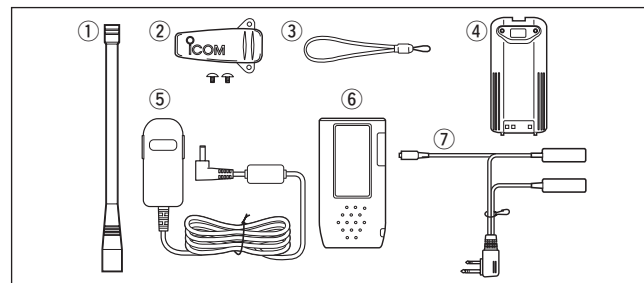
The explicit definitions below apply to this instruction manual.

WORD	DEFINITION
⚠ DANGER!	Personal death, serious injury or an explosion may occur.
⚠ WARNING!	Personal injury, fire hazard or electric shock may occur.
CAUTION	Equipment damage may occur.
NOTE	If disregarded, inconvenience only. No risk of personal injury, fire or electric shock.

SUPPLIED ACCESSORIES

Accessories included with the transceiver:	Qty.
① Antenna	1
② Belt clip	1
③ Handstrap	1
④ Battery pack* or battery case.....	1
⑤ Wall charger*	1
⑥ Carrying case*	1
⑦ Headset adapter*	1

* Not supplied, or the shape may be different, depending on the version.



For Canada:

This device complies with RSS-310 of Industry Canada. Operation is subject to the condition that this device does not cause harmful interference.

Cet appareil est conforme au CNR-310 d'Industrie Canada. Son exploitation est autorisée sous réserve que l'appareil ne cause pas de brouillage préjudiciable.

PRECAUTION

⚠ **DANGER! NEVER** short the terminals of the battery pack. Also, current may flow into nearby metal objects, such as a necklace, etc. Therefore, be careful when carrying with, or placing near metal objects, carrying in handbags, etc.

⚠ **DANGER!** Use and charge only specified Icom battery packs with Icom radios or Icom chargers. Only Icom battery packs are tested and approved for use with Icom radios or charged with Icom chargers. Using third-party or counterfeit battery packs or chargers may cause smoke, fire, or cause the battery to burst.

⚠ **WARNING! NEVER** hold the transceiver so that the antenna is very close to, or touching exposed parts of the body, especially the face or eyes, while transmitting. The transceiver will perform best if the microphone is 5 to 10 cm (2 to 4 inches) away from the lips and the transceiver is vertical.

⚠ **WARNING! NEVER** operate the transceiver with a headset or other audio accessories at high volume levels. Hearing experts advise against continuous high volume operation. If you experience a ringing in your ears, reduce the volume level or discontinue use.

CAUTION: NEVER connect the transceiver to an AC outlet or to a power source of more than 11.5 V DC. Such a connection will damage the transceiver.

CAUTION: NEVER connect the transceiver to a power source that is DC fused at more than 5 A. Accidental reverse connection will be protected by this fuse, higher fuse values will not give any protection against such accidents and the transceiver will be ruined.

DO NOT allow children to play with any radio equipment containing a transmitter.

DO NOT operate the transceiver near unshielded electrical blasting caps or in an explosive atmosphere.

DO NOT use or place the transceiver in direct sunlight or in areas with temperatures below -10°C ($+14^{\circ}\text{F}$) or above $+60^{\circ}\text{C}$ ($+140^{\circ}\text{F}$).

Even when the transceiver power is OFF, a slight current still flows in the circuits. Remove the battery pack or case from the transceiver when not using it for a long time. Otherwise, the battery pack or installed Alkaline cell batteries will become exhausted.

FCC caution: *Changes or modifications to this transceiver, not expressly approved by Icom Inc., could void your authority to operate this transceiver under FCC regulations. (U.S.A. only)*

Icom, Icom Inc. and the Icom logo are registered trademarks of Icom Incorporated (Japan) in Japan, the United States, the United Kingdom, Germany, France, Spain, Russia and/or other countries.

TABLE OF CONTENTS

FOREWORD	i
IMPORTANT	i
EXPLICIT DEFINITIONS	i
SUPPLIED ACCESSORIES	i
PRECAUTION	ii
TABLE OF CONTENTS	iii
1 ACCESSORY ATTACHMENT	1
2 PANEL DESCRIPTION	2-7
■ Panel description	2
■ Function display	6
3 BASIC OPERATION	8-11
■ Setting a frequency	8
■ Selecting a weather channel (U.S.A. version only)	8
■ Receiving	9
■ ANL function	9
■ Channel spacing setting	9
■ Setting a squelch level	9
■ Transmitting	9
■ Low battery indicator	10
■ Recall function	10
■ Setting weather alert function	11
■ Accessing the 121.5 MHz emergency frequency	11
■ Lock function	11
■ Side tone function	11
■ Setting beep tone	11
4 MEMORY OPERATION	12-15
■ Memory channel selection	12
■ Transferring memory contents	12
■ Programming a memory channel	13
■ Memory names	14
■ Clearing the memory contents	14
5 SCAN OPERATION	16-17
■ Scan types	16
■ COM band scan	16
■ Memory scan	16
■ Weather channel scan (U.S.A. version only)	17
■ "TAG" channel setting	17
6 VOR NAVIGATION (IC-A24 ONLY)	18-24
■ VOR indicators	18
■ VOR functions	19
■ Flying to a VOR station	20
■ Entering a desired course	22
■ Crosschecking position	22
■ Duplex operation (U.S.A. version only)	24
7 CLONING	25
8 BATTERY PACKS	26-29
■ Battery cautions	26
■ Battery charging	26
■ Optional battery case	27
■ Optional battery chargers	28
9 SPECIFICATIONS	30-31
10 OPTIONS	32
11 OPTIONAL HEADSET CONNECTION	33
12 SAFETY TRAINING INFORMATION	34-35
13 FOR CLASS A UNINTENTIONAL RADIATORS	36
14 TROUBLESHOOTING	37
INDEX	38-39

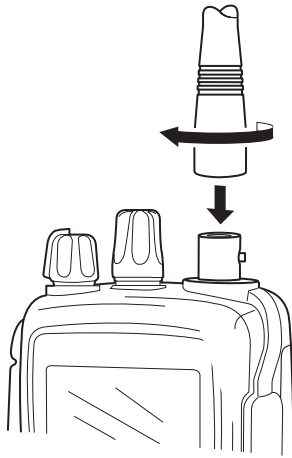
ACCESSORY ATTACHMENT

1

◇ Antenna

CAUTION: DO NOT transmit without an antenna. Otherwise the transceiver may be damaged.

Insert the supplied antenna into the antenna connector and screw down the antenna as shown below.



NOTE: About water resistant construction

The water resistant construction provides reliable operation in wet conditions.

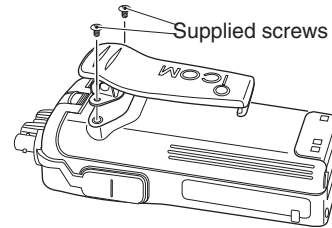
- Equivalent to IPX4 of corresponding international standard IEC 60529 (2001).

◇ Belt clip

Conveniently attaches to your belt.

Attach the belt clip with the supplied screws as below.

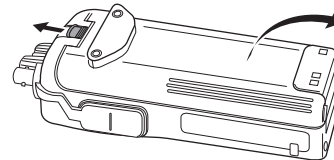
⚡ **NOTE:** Use the supplied screws only.



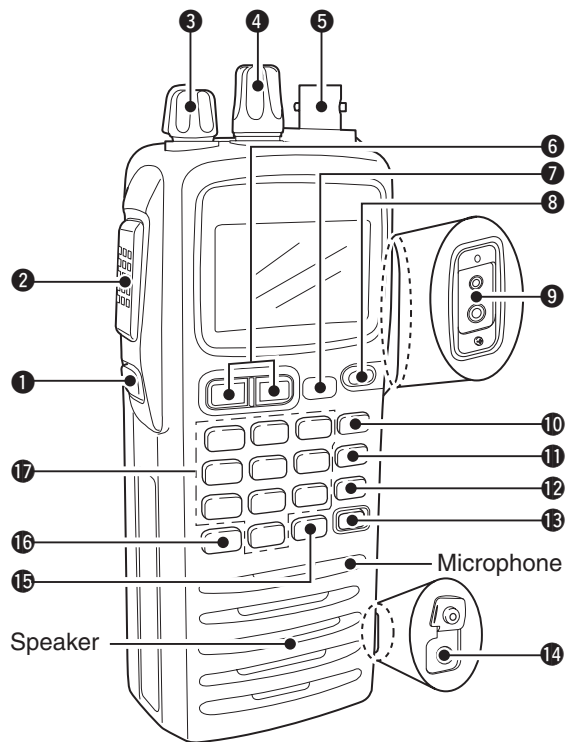
◇ Battery pack replacement

Before replacing the battery pack, push [PWR] for 2 seconds to turn the power OFF.

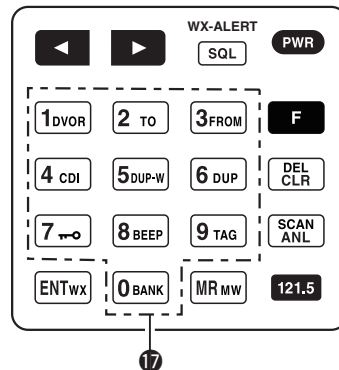
Slide the battery release button forward, then pull the battery pack upward with the transceiver facing away from you.



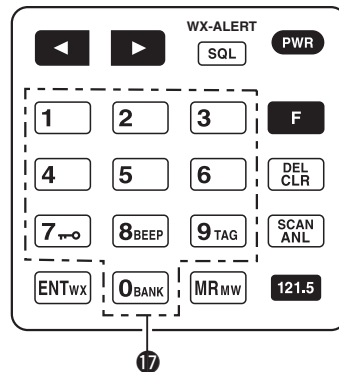
■ Panel description



IC-A24



IC-A6



1 BACKLIGHT SWITCH [LIGHT]

Turns the backlight for display and keypad ON or OFF.

2 PTT SWITCH [PTT] (p. 9)

Hold down to transmit; release to receive.

- “TX” appears on the function display while transmitting.

3 VOLUME [VOL] (p. 9)

Adjusts the audio level.

4 TUNING DIAL [DIAL] (pp. 8–12)

- ➔ Rotate [DIAL] to select the desired frequency, WX channel number, BANK number and memory channel.
- ➔ Rotate [DIAL] to set the squelch level and beep tone level.

5 ANTENNA CONNECTOR [ANT] (p. 1)

Connect the supplied antenna here.

6 RECALL CHANNEL UP/DOWN KEYS [◀]/[▶] (p. 10)



➔ Push to enter the recall function mode.

➔ Push to call the stored frequency in the recall mode.



➔ Push [F], then push [◀]/[▶] to replace stored recall frequencies to back or front.

7 SQUELCH KEY [SQL•WX-ALERT] (p. 9)



➔ Push [SQL•WX-ALERT], then rotate [DIAL] to select the squelch level.

- 24 squelch levels and squelch open (0) are available.

➔ Push [F], then push [SQL•WX-ALERT] to turn the WX-alert function ON or OFF.

8 POWER SWITCH [PWR] (pp. 9, 25)



➔ Hold down for 2 seconds to turn the power ON or OFF.

➔ While holding down [MR•MW], push [PWR] to enter the cloning function mode.

9 EXTERNAL SPEAKER AND MICROPHONE JACKS

[MIC/SP] (p. 33)

If desired, connect an OPC-499 HEADSET ADAPTER and headset.

10 FUNCTION KEY [F]



Push to call up the function indicator, “F”, then push another key to access its secondary function.

- “F” appears for 3 seconds after [F] is pushed; at this time pushing [F] again cancels the indication.

NOTE: In general, “F” disappears when another key is pushed to activate a secondary function. However, some keys which have more than one secondary function, (such as [DUP]), do not cancel “F”. In this case, “F” automatically disappears after 3 seconds

Count on us!

A-6987D-1EX-①

Printed in Japan

© 2011–2012 Icom Inc.

Printed on recycled paper with soy ink.

Icom Inc.

1-1-32 Kamiminami, Hirano-ku, Osaka 547-0003, Japan